

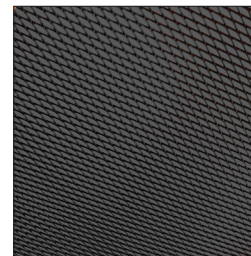


DecoMesh

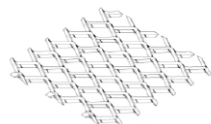
Use Zentia's DecoMesh to achieve an industrial and contemporary look. Installed on Gridline 15 and Gridline 24 suspension systems, DecoMesh is an ideal choice for transport hubs, renovation projects wanting a modern touch and in general spaces with large ceiling areas.

Key Features

- // Contemporary design aesthetic
- // Available as Board and Tegal edge detail
- // Compatible with standard grid systems
- // Six mesh patterns offering a range of design and effect options
- // Available in a range of colours
- // Suitable for transport hubs, office areas and large lobby areas etc.



Mesh Patterns



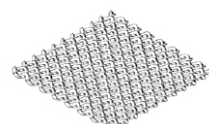
RB25

Long diagonal: 16mm
Short diagonal: 8mm
Open area: 50%



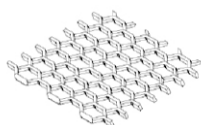
RB35

Long diagonal: 28mm
Short diagonal: 10mm
Open area: 58%



KD100

Long diagonal: 6mm
Short diagonal: 4.5mm
Open area: 36%



E15

Long diagonal: 15mm
Short diagonal: 6.5mm
Open area: 45%



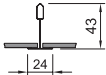
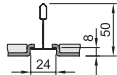
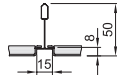
R10

Long diagonal: 10mm
Short diagonal: 5.8mm
Open area: 45%



R28

Long diagonal: 28mm
Short diagonal: 14mm
Open area: 74%

| Edge Detail | Board | Tegal24 | Tegal15 |
|---------------------------|---|---|---|
| |  |  |  |
| Modules (mm) | <p>RB25 600 x 600 MRB25B66 1200 x 600 MRB25B126</p> <p>RB35 600 x 600 MRB35B66 1200 x 600 MRB35B126</p> <p>KD100 600 x 600 MKD100B66 1200 x 600 MKD100B126</p> <p>E15 600 x 600 ME15B66 1200 x 600 ME15B126</p> <p>R10 600 x 600 MR10B66 1200 x 600 MR10B126</p> <p>R28 600 x 600 MR28B66 1200 x 600 MR28B126</p> | <p>RB25 600 x 600 MRB25T66</p> <p>KD100 600 x 600 MKD100T66</p> <p>R10 600 x 600 MR10T66</p> | <p>RB25 600 x 600 MRB25M66</p> <p>KD100 600 x 600 MKD100M66</p> <p>R10 600 x 600 MR10M66</p> |
| Suspension Systems | Gridline 24 Butt Cut / Joggled Available in Nexus Layouts | Gridline 24 Butt Cut / Joggled | Gridline 15 Butt Cut / Joggled |

Sustainability



48



A+



EN 13964 / E1

Fire Reaction



Euroclass A2-s1, d0
EN 13501-1

Performances & Features



95% RH



RB25: 3.95kg/m² E15: 3.15kg/m²
RB35: 4.80kg/m² R10: 3.90kg/m²
KD100: 4.15kg/m² R28: 3.40kg/m²



30 Year
System
Guarantee

Custom Options

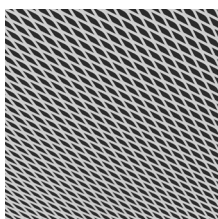


Dimensions

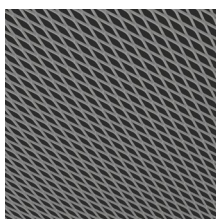


Colours

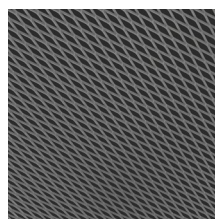
Standard Colours (RAL)



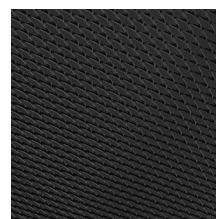
White (9003)



Aluminium (9006)

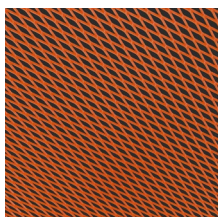


Grey (9007)

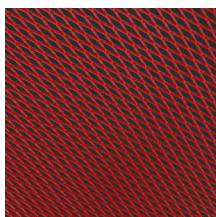


Black (9005)

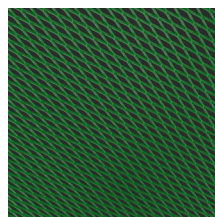
Non-standard Colours (RAL)



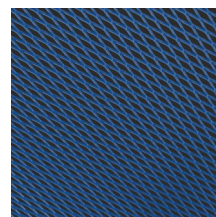
Orange (2003)



Red (3020)



Green (6037)



Blue (5015)

Accessories

Hold down clip | BPOCHC

If you would like to order a sample or have any queries about this product please contact our Technical Sales Team on **0800 371 849** or email enquiries@zentia.com

TDS 069.4.09.24